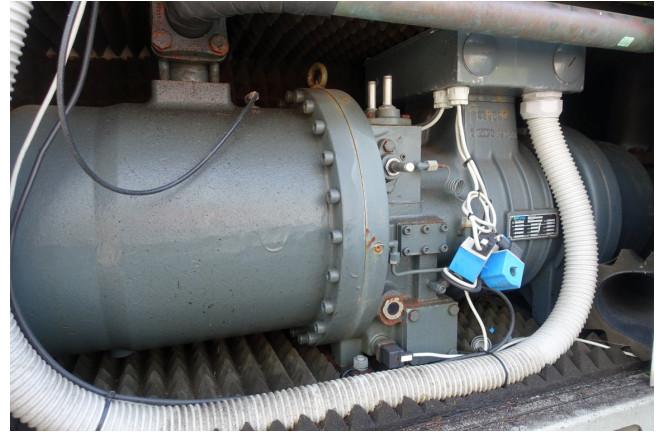


Refcomp SRC S 253 L4

Specifications

Marka	Refcomp
Typ	SRC S 253 L4
Czynnik chłodzący	Freon
Refrigerant type	R407 C or other types
kW at 0°C/+40°C	210
kW at -5°C/+40°C	170.8
kW at -10°C/+40°C	136.4
Separator oleju	✓
Okno widokowe	✓
Uwagi	*Capacity based on +2°C/+40°C // y.o.b. 2002 // 286 m ³ /h
Waga kg.	615
Rozmiary	1500x640x700 mm (LxWxH)
Stock	1



Description

Used Refcomp SRC S 253 L4

RefComp compressor SRC S 253 L4 /
This RefComp uses refrigerant R 407 C
/ kW 75 / 286 Vol m³/h

